

Short introduction to the ProSUM project

Brussels, 27 September 2016



This project has received funding from the European Union's Horizon 2020 research and innovation programme under grant agreement No 641999.



9450 ktons
WEEE Generated**
(calculated, incl.
discarded UEEE)

CWIT Countering WEEE
Illegal Trade

3200 ktons
Gap
(determined from
mass balance)

Outside EU

Key assumptions:

The darker numbers are based on available statistics, the lighter colours, especially in the middle, are based on reasonable and cross-checked estimates. All numbers are rounded to 50 kilotons.

* WEEE = discarded waste electrical and electronic equipment or e-waste. UEEE = used EEE.

** Magalini et al., 2015: Study on collection rates of waste electrical and electronic equipment (WEEE), final report for European Commission – DG ENV. The flow includes discarded, but reusable UEEE.

*** Official reported collection from Eurostat per 1/6/2015, complemented with WEEE Forum data.

**** Waste bin data is representing different sampling years, disposal behavior assumed to remain constant.

3300 ktons
Official collection***
Reported, min. value
(depollution not
commonly secured)

750 ktons
Waste bin****
(data from 15 countries
extrapolated to
EU28+2)

2200 ktons
Non-compliant collection
and recycling
(mixed metal scrap)
(estimated)

950 ktons
Additional non-compliant
Collection and recycling
WEEE in EU
(estimated)

750 ktons
Scavenged
WEEE parts and
fractions
(mainly ex EU)

200 ktons
Documented
UEEE export
(5 countries only)
(min.value)

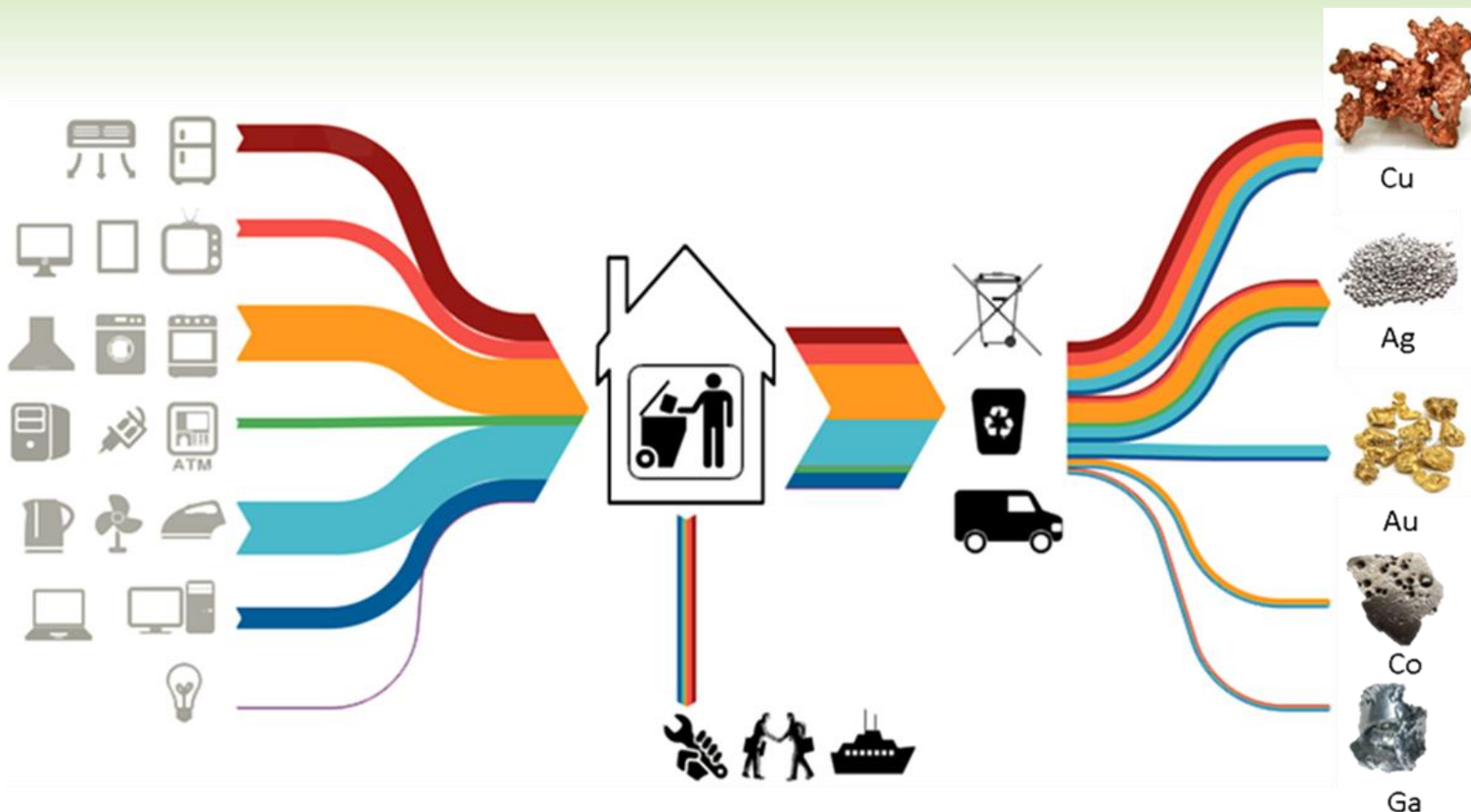
1300 ktons
Undocumented
export
UEEE + WEEE
(estimated)

900 ktons
Undocumented
export of
UEEE
(estimated)

400 ktons
Undocumented
export of
WEEE
(estimated)

2 ktons
Seized WEEE
shipments
(reported)
(min. value)

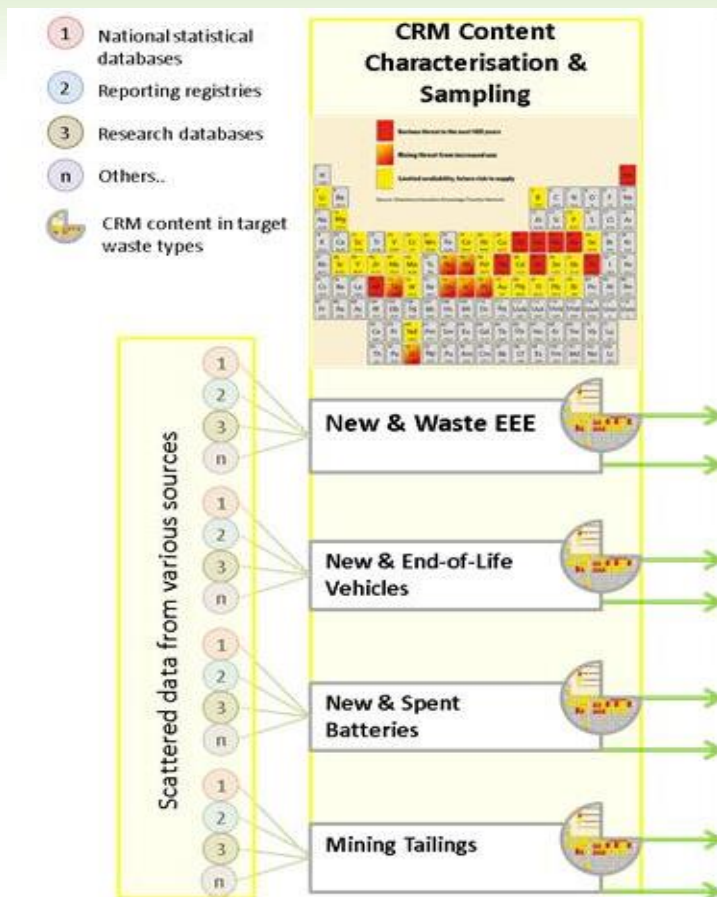
Outline



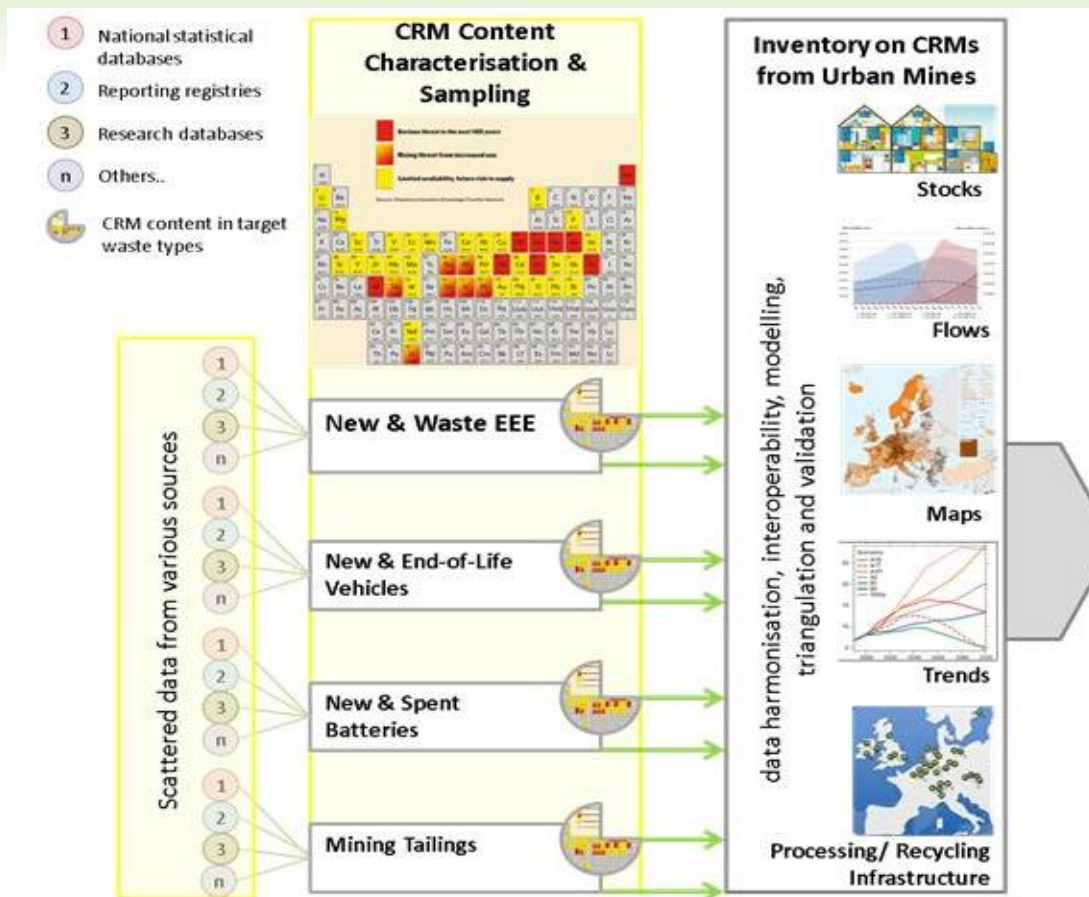
ProSUM Consortium



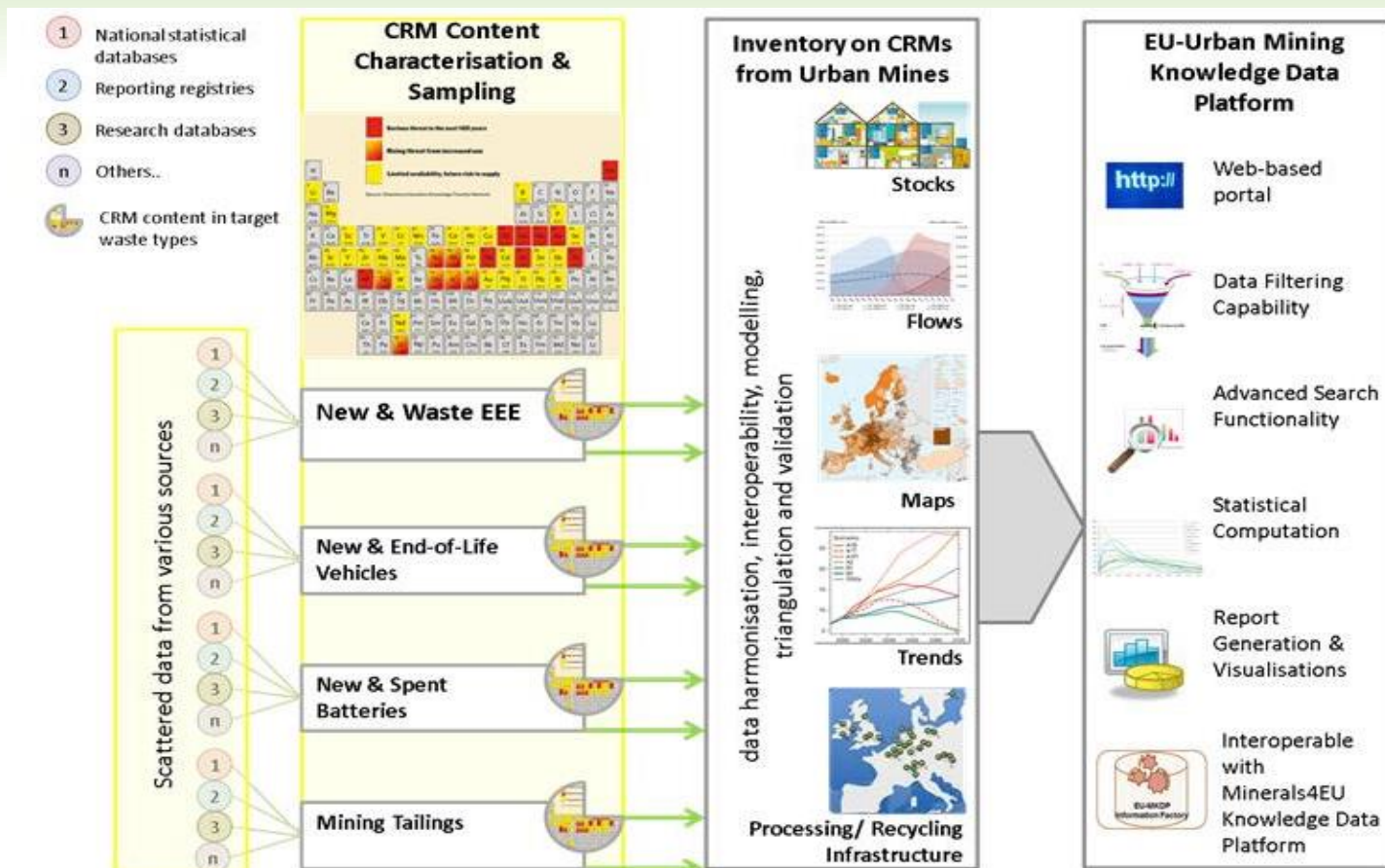
EU-UMKDP



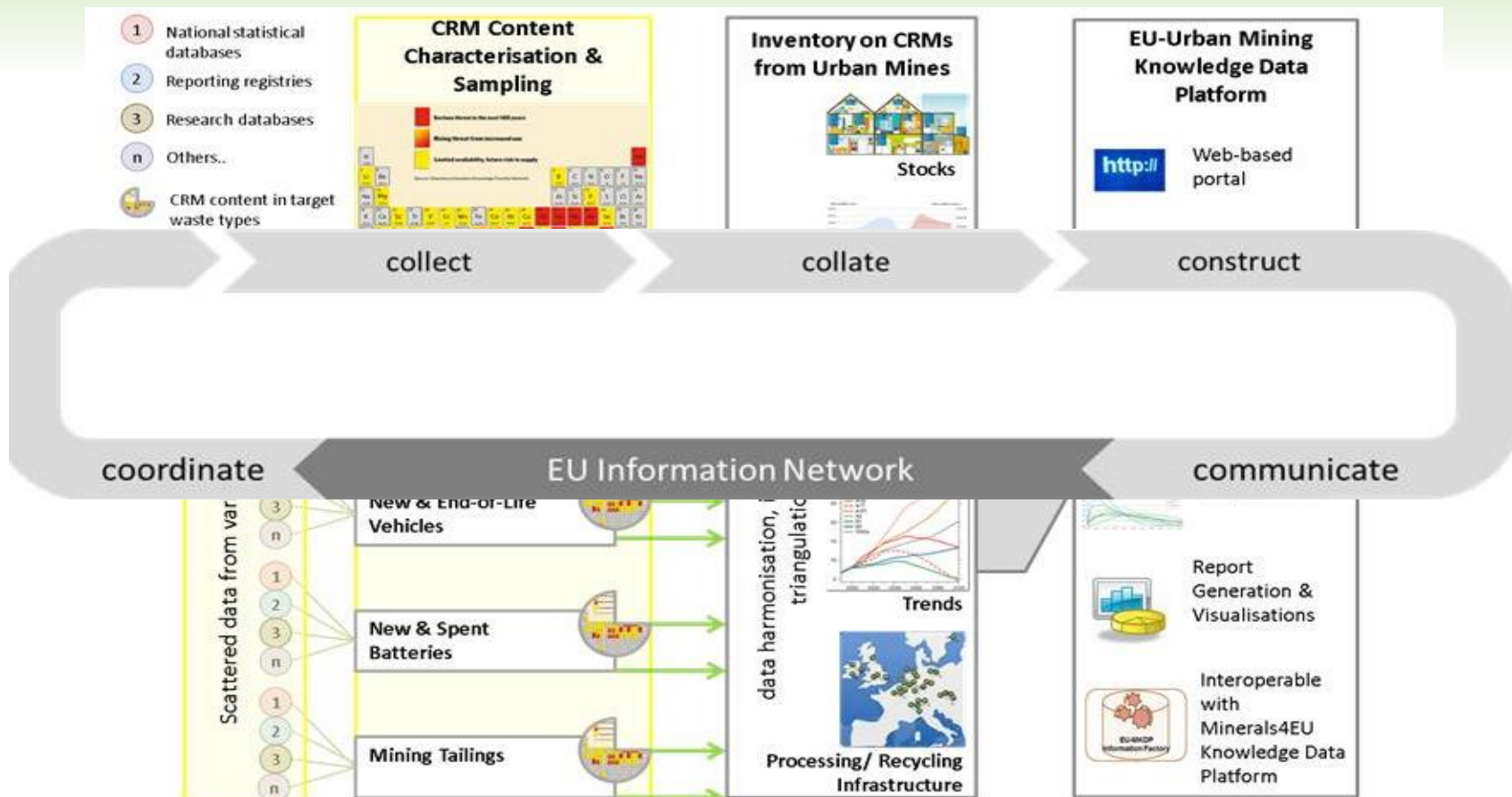
EU-UMKDP



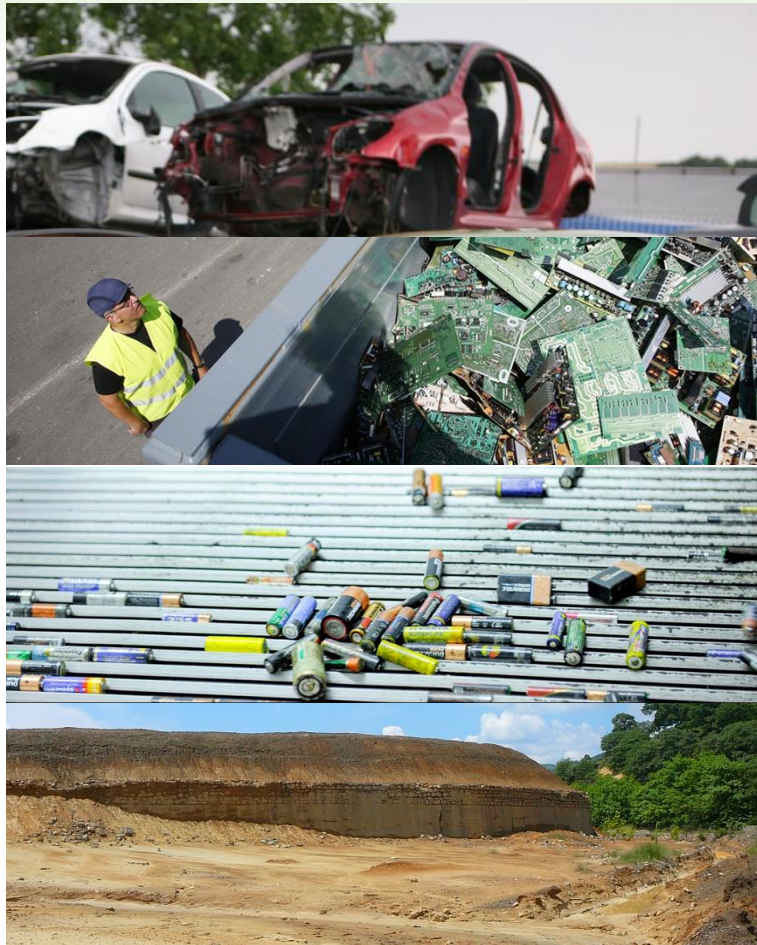
EU-UMKDP



EU-UMKDP



Approach



Product Characterisation



Factors and trends in composition that affect the CRM content for products and components. Protocols for assessing CRM parameters in products for EEE, vehicles and batteries.

Stocks and flows



Past sales, current stocks and future waste stocks and their flows around the EU. Protocols to identify future stocks and flows.

Waste Characterisation



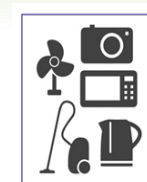
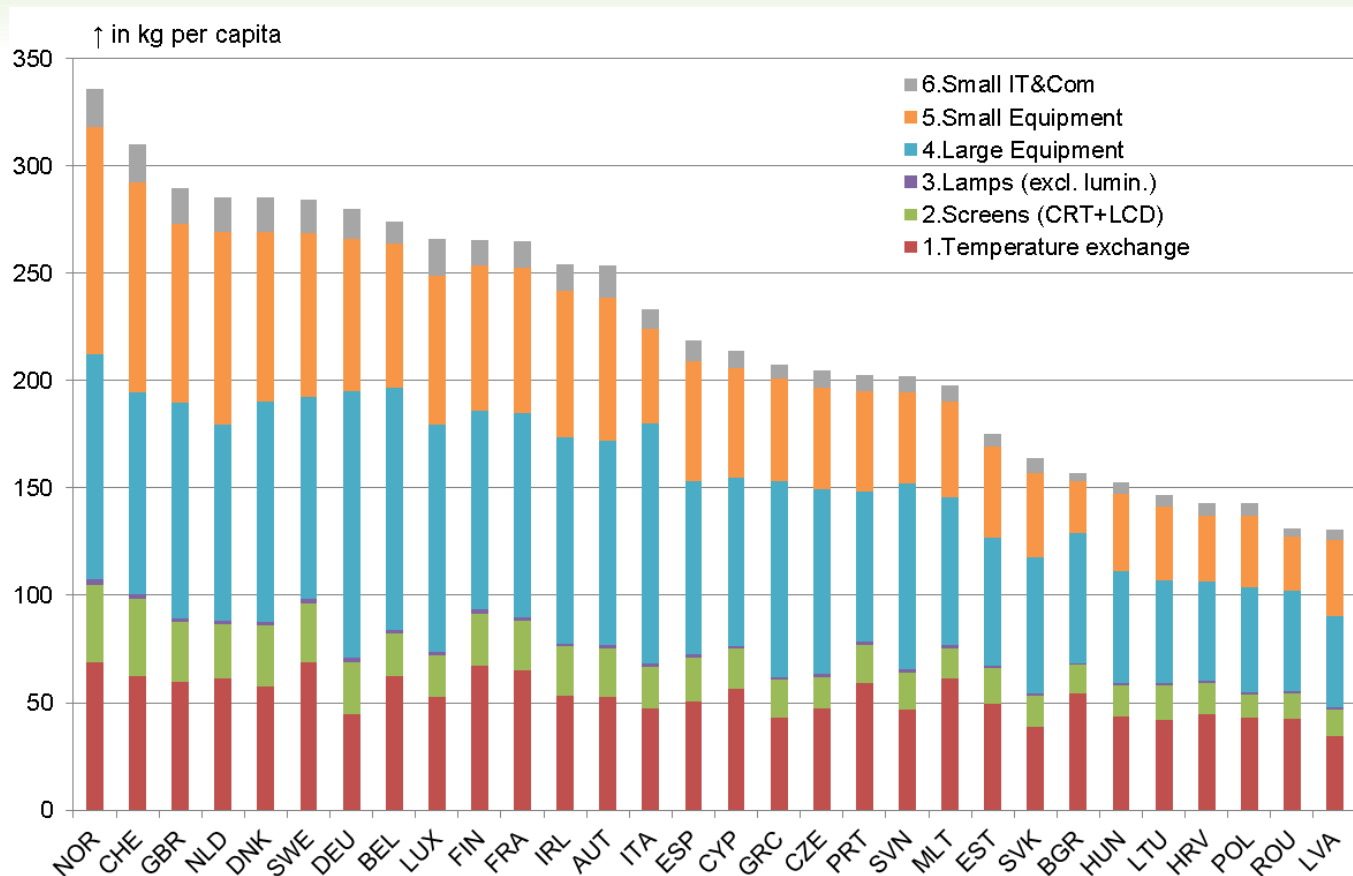
The CRM content of treated wastes and mining wastes. Protocols for assessing CRM parameters in wastes.

Join the Information Network!

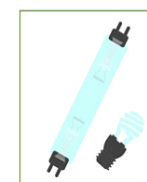


A dynamic platform for the entire stakeholder community. Join the community of professionals working to improve data availability and the knowledge base on CRMs.

Example: EU 2014 EEE 'Stock'



5. Small Equipment



3.Lamps



1.Temperature Exchange



6. Small IT



4. Large Equipment



2. Screens

There is ≈ 123 million tonnes in the 'Urban Mine'! (EU28+2)
(Source: UNU)



European minerals databases



Development of a sustainable exploitation scheme for Europe's REE ore deposits



Development of solutions for sustainable deep sea mining



Nano-particle products from new mineral resources from Europe



web GIS technologies for the sustainable supply with Energy & Mineral Resources



MICA
Minerals Intelligence Capacity Analysis



European Geological Data Infrastructure



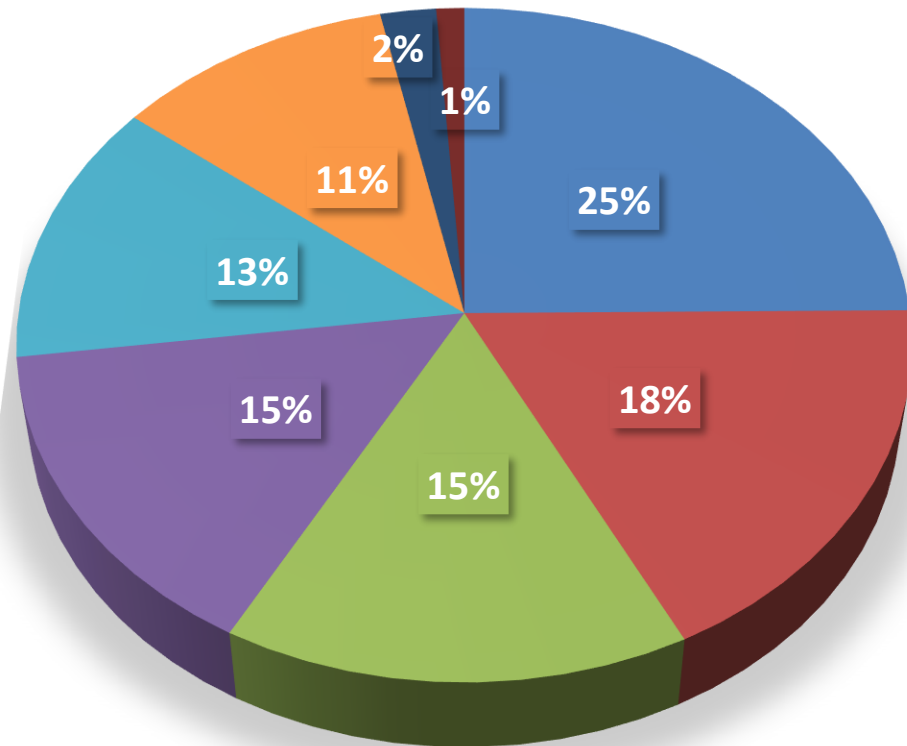
EUMINET

European Minerals Information Network



Types of stakeholders in the ProSUM IN

Total of 180 stakeholders
(July 2016)



- Academia/research institutions
- Collection and Recycling Industry
- Product manufacturing industry (incl. EPR organisations)
- Geological surveys
- Others
- EC/national government
- Municipal and regional (waste) authority
- Media/NGO

Special Interest Groups in the IN

Six SIGs have been established:

- Sampling and analysis;
- Mining waste;
- ELV;
- BATT;
- Recycling and
- WEEE.



Thank you.

Pascal Leroy

Lucía Herreras-Martínez



This project has received funding from the European Union's Horizon 2020 research and innovation programme under grant agreement No 641999.